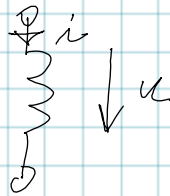


INDUKČNOST

STATICKÁ $\Phi = \int \vec{B} \cdot d\vec{S}$

$L = \frac{\Phi}{I} \leftarrow$

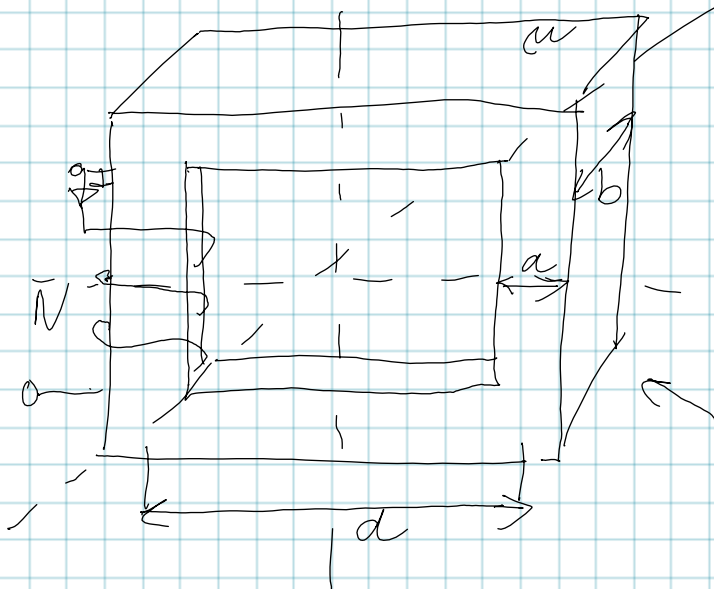
DYNAMICKÁ $u = -L di/dt$



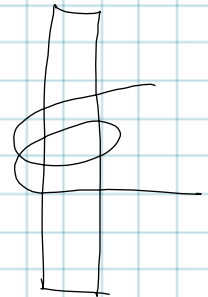
ENERGETICKÁ $W_m = \frac{1}{2} L I^2$

$R_m \quad I \quad \Phi$
 U_m

$U_m = R_m \Phi$
 $A \quad [wb]$



$\mu \rightarrow \mu_0$



$R_m = \frac{4 \mu d}{\mu_0 a b}$

$R_m = \frac{1}{\mu} \frac{l}{S}$

$L = \frac{N^2}{R_m} \rightarrow \frac{N^2 \mu a b}{4 d}$