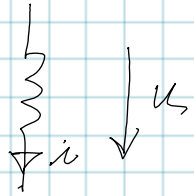


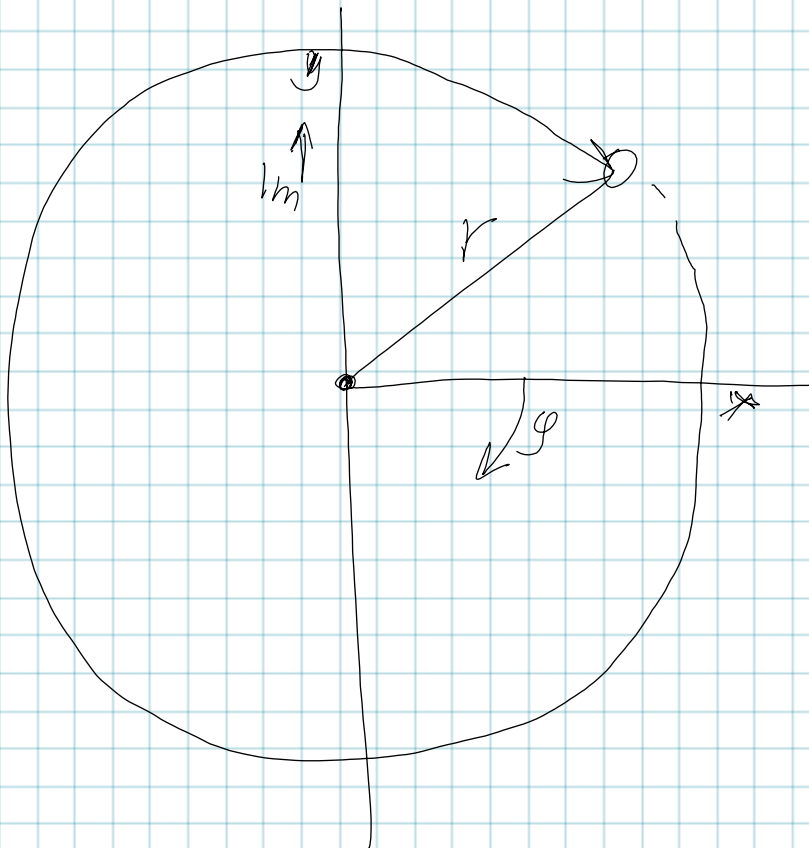
$$u = \frac{1}{C} \int i \, ds$$



$$i = -\frac{1}{L} \int u \, ds$$

HARMONICKÝ USTÁLENÝ STAV

$$i = I_{\max} \sin(2\pi f t)$$



$$x = r \cos \varphi$$
$$y = r \sin \varphi$$

$$P = r e^{-j\varphi}$$